



BUC

C-BAND 3010XPM

10W NON-INVERTED

FEATURES

- Compact size and light weight (ideal for direct mount on antenna OMT that provides no TX loss)
- Low power consumption
- Non-standard frequency range options available
- Status LED

TYPICAL SPECIFICATIONS

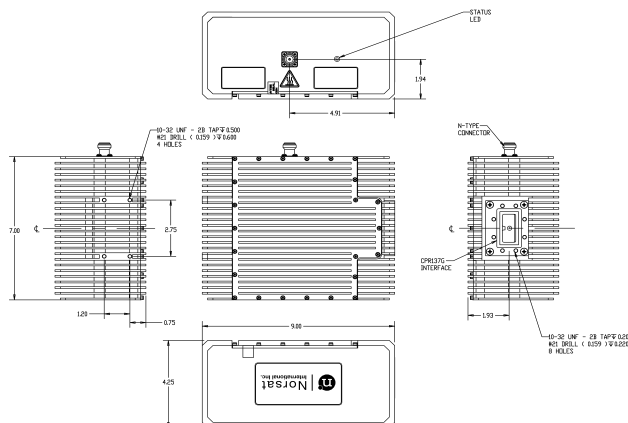
Output frequency	Band 1: 5.850 GHz to 6.425 GHz Band 2: 5.850 GHz to 6.725 GHz Band 3: INSAT (6.725 GHz to 7.025 GHz) Band 4: Palapa (6.425 GHz to 6.725 GHz)
Input frequency	Band 1: 950 to 1525 MHz Band 2: 950 to 1825 MHz Band 3: INSAT (1275 to 1575 MHz) Band 4: Palapa (975 to 1275 MHz)
Output to P1dB	40 dBm
L.O. frequency	4.9 GHz (5.450 GHz)
Phase noise (SSB)	meets IESS 308
External reference signal frequency	10 MHz (internal reference, optional)
Power requirements	+18 to +50 VDC
Power consumption	75 W
Output waveguide	CPR-137G



- FSK Interface (Mute control, RF power detection, Alarm status, Temperature monitoring, Lock status) via IF cable,
- M&C- Standard: FSK via Coaxial Connector; RS485/RS32/Ethernet optional via MS Connector
- Both Internal and External 10 MHz reference options available
- Wide range of supply voltage 24-48 VDC for 10 W

External reference level	0dBm to ± 5 dBm (internal reference, optional)
10 MHz external reference	-135 dBc/Hz at 100 Hz
Gain	60 dB min
Gain stability over temperature	± 1.5 dB nominal, ± 2.0 dB max.
Gain variation at fixed temperature	Over full band: Bands 1 & 4: ± 2.0 dB Band 2: ± 2.50 dB Band 3: ± 2.25 dB over 40 MHz, ± 0.5 dB for all bands
Temperature range	-40°C to +55°C
Dimensions	228.6 (L) x 177.8 (W) x 76.2 (H) mm (9 x 7 x 3 in)
Weight	4 kg / 8.8 lb

MECHANICAL DIAGRAM



HOW TO ORDER

3010XPMN

CONNECTOR	N - 50 Ohm
FREQUENCY	M - 5.850 - 6.425 GHz ME - 5.850 - 6.725 GHz MI - 6.725 - 7.025 GHz MP - 6.425 - 6.725 GHz
P1dB	10 - 10W
TRANSMITTER SERIES #	

