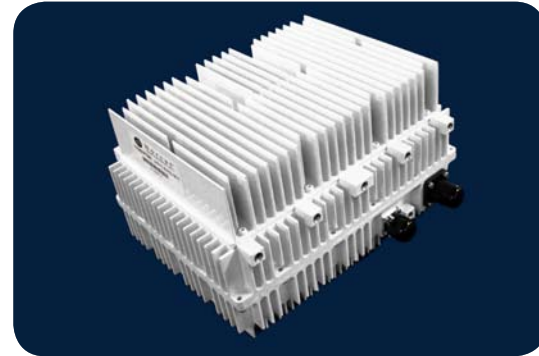




BUC

C-BAND 3100XPT

10W NON-INVERTED

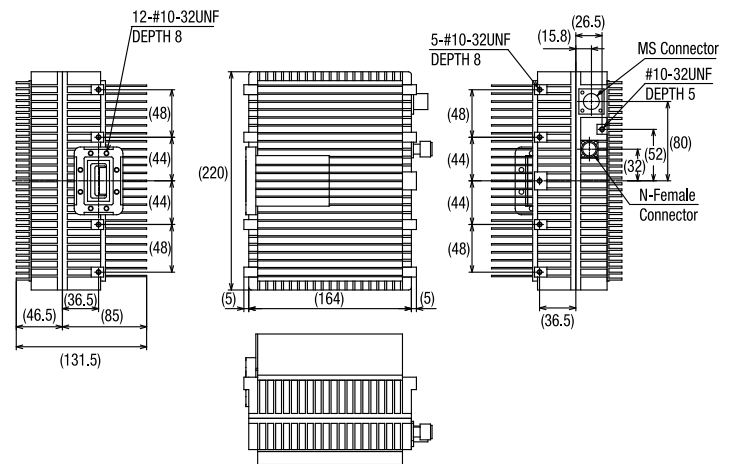


TYPICAL SPECIFICATIONS

Output frequency	5.850 GHz to 6.425 GHz
Input frequency	950 to 1525 MHz
Output to P1dB	40 dBm
L.O. frequency	4.9 GHz
Input VSWR	2.0 : 1
Output VSWR	2.0 : 1
Phase noise (SSB)	-75 dBc/Hz at 1 kHz -83 dBc/Hz at 10 kHz -96 dBc/Hz at 100 kHz
External reference signal frequency	10 MHz
Power requirements	+36 to +48 V supplied through MS connector
Power consumption	75 W
Output Waveguide	CPR-137G
Dimensions	220 (L) x 174 (W) x 132 (H) mm (8.7 x 6.9 x 5.2 in)
Weight	4.5 kg / 9.9 lb

External reference level	-5 to +5 dBm
10 MHz external reference phase noise	-135 dBc/Hz at 100 Hz -140 dBc/Hz at 1 kHz -150 dBc/Hz at 10 Hz
Gain (including variation over temperature and frequency)	60 dB min 70 dB max
Gain stability over temperature	±2.25 dB at any constant frequency
Gain stability in-band at any constant temperature	±1.0 dB in any 54 MHz band ±2.5 dB over full 575 MHz band
Temperature Range	-40°C to +55°C

MECHANICAL DIAGRAM



HOW TO ORDER

3100XPTN

CONNECTOR	F - 75 Ohm N - 50 Ohm
P1dB	10 - 10 W
TRANSMITTER SERIES #	

