



BUC KU-BAND 1016XRT 16W NON-INVERTED

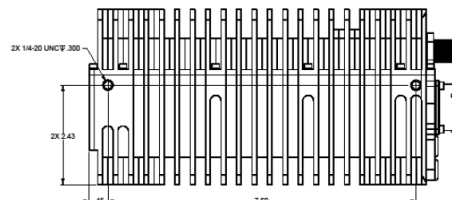
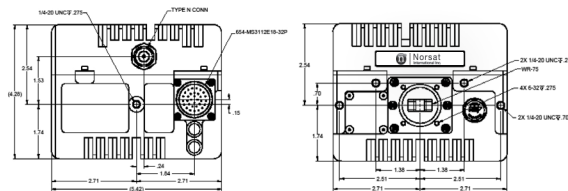


TYPICAL SPECIFICATIONS

Output frequency	14.0 GHz to 14.5 GHz 13.75 GHz to 14.5 GHz (extended)
Input frequency	950 to 1450 MHz 950 to 1700 GHz (extended)
LO frequency	13.05 GHz 12.80 GHz (extended)
P1dB Output Power	> 42 dBm
Input VSWR	2 : 1
Output VSWR	1.25 : 1
Phase noise	Meets IESS-308
Small Signal Gain	70 dBm nominal
Gain Adjustment	20 dB, 2 dB steps nominal
Gain Variation (over frequency at fixed temperature)	0.5 dB over 36 MHz, 3 dB over 500 MHz
Gain Variation (over temperature at fixed frequency)	3 dB p-p over operating range
Saturated Output Power (nominal)	42.5 dBm
Output Spurious	-55 dBc
Prime Power	28 V, 48 V, IFL option (130W)
IF Input Impedance	50 ohms
RF Port Connector	WR-75
DC & M&C Connector	32 Pin Military Circular
Monitor and Control	Serial RS-485 (SA-bus), Forward Power Monitor, Step Attenuator

Frequency Reference (10MHz on IF)	0 dm ±5dB
Intermodulation with two equal carriers at 3dB total power backoff from rated power	-25 dBc
Spectral Regrowth (typical) at 2db below rated output power at 1.0x symbol rate offset for OQPSK or QPSK	-30 dBc
Noise Power, maximum Receive band	-150 dBw / 4 kHz
LED Indicators	Summary Fault (Red) Loss of Lock (Yellow)
Temperature Range	fanless -40°C to 55°C with fan -40°C to 60°C
Dimensions	fanless 9.1" (L) x 5.4" (W) x 4.3" (H) 231 (L) x 137 (W) x 109 (H) mm with fan 10.3" (L) x 5.4" (W) x 4.4" (H) 262 (L) x 137 (W) x 112 (H) mm
Weight	fanless 9.0 lbs 4.1 kg with fan 9.2 lbs 4.2 kg

MECHANICAL DIAGRAM



Note: fanless option shown

HOW TO ORDER

1016XRTNE

H	14.0 - 14.5
E	13.75 - 14.5
CONNECTOR	N F
P1dB	16 W
TRANSMITTER SERIES #	