



MFC

Microwave Filter Company, Inc.

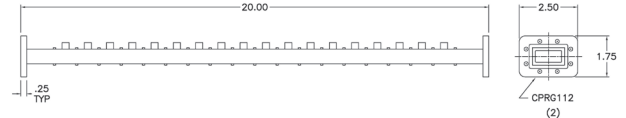
Creating Filters and Components to 50 Ghz for Over 50 Years!

X-Band Transmit Reject Filter
Model 16517

This downlink filter offers extremely high suppression of the uplink (transmit) band.

Specifications:

Passband:	7.25 - 7.75 GHz
Insertion Loss:	1.0 dB Typ
VSWR:	1.2:1 Max
Reject Band:	7.9 - 8.4 GHz
Rejection:	100 dB Min
Pressurization:	5 PSIG Max
Flanges:	CPR112G
Weight:	2 lbs (0.9 Kg)
Dimensions:	20.0" x 1.5" x 1.5" (508mm x 38mm x 38mm)
Finish:	Flat Black Lacquer



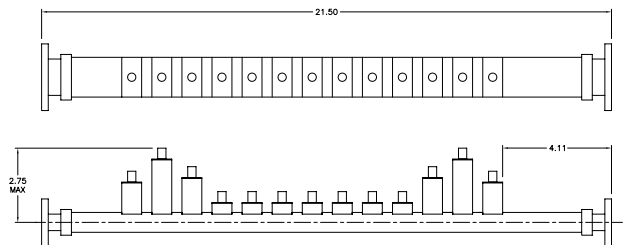
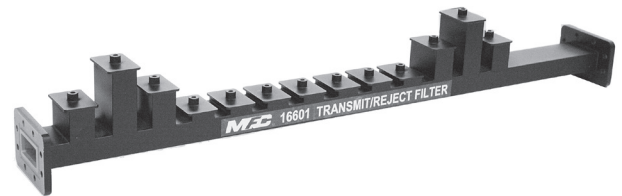
- *Alternate flange configurations are available upon request.*

X-Band Transmit Reject Filter Model 16601

This downlink filter provides a CPR137 interface and offers extremely low loss, while exhibiting very high suppression of the uplink (transmit) band.

Specifications:

Passband:	7.25 - 7.75 GHz
Insertion Loss:	0.20 dB
VSWR:	1:15:1
Rejection Band:	7.9 - 8.4 GHz
Rejection:	90 dB Min
Power:	250 Watts
Flanges:	CPR137G
Weight:	3.5 lbs (1.63 Kg)
Dimensions:	21.5" x 2.69" x 3.7" (546mm x 68mm x 94mm)
Finish:	Flat Black Lacquer



All MFC Products Designed and Manufactured in the USA



E-Mail: Sales@iktechcorp.com